



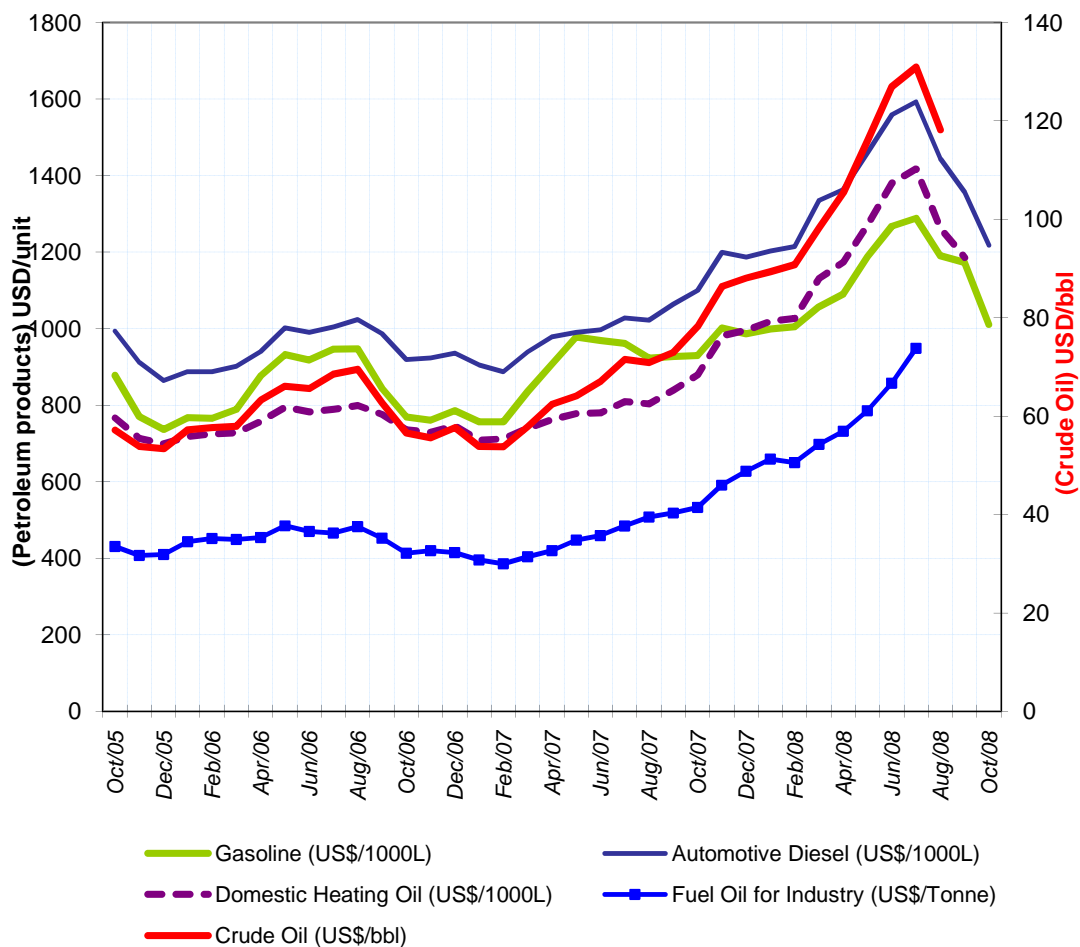
END-USER PETROLEUM PRODUCT PRICES AND AVERAGE CRUDE OIL IMPORT COSTS

October 2008

INTERNATIONAL ENERGY AGENCY
AGENCE INTERNATIONALE DE L'ENERGIE

9, rue de la Fédération, 75739 PARIS CEDEX 15 FRANCE

prices@iea.org



* Weighted average price including taxes using current exchange rates for France, Germany, Italy, Spain, UK, Japan, Canada and USA.

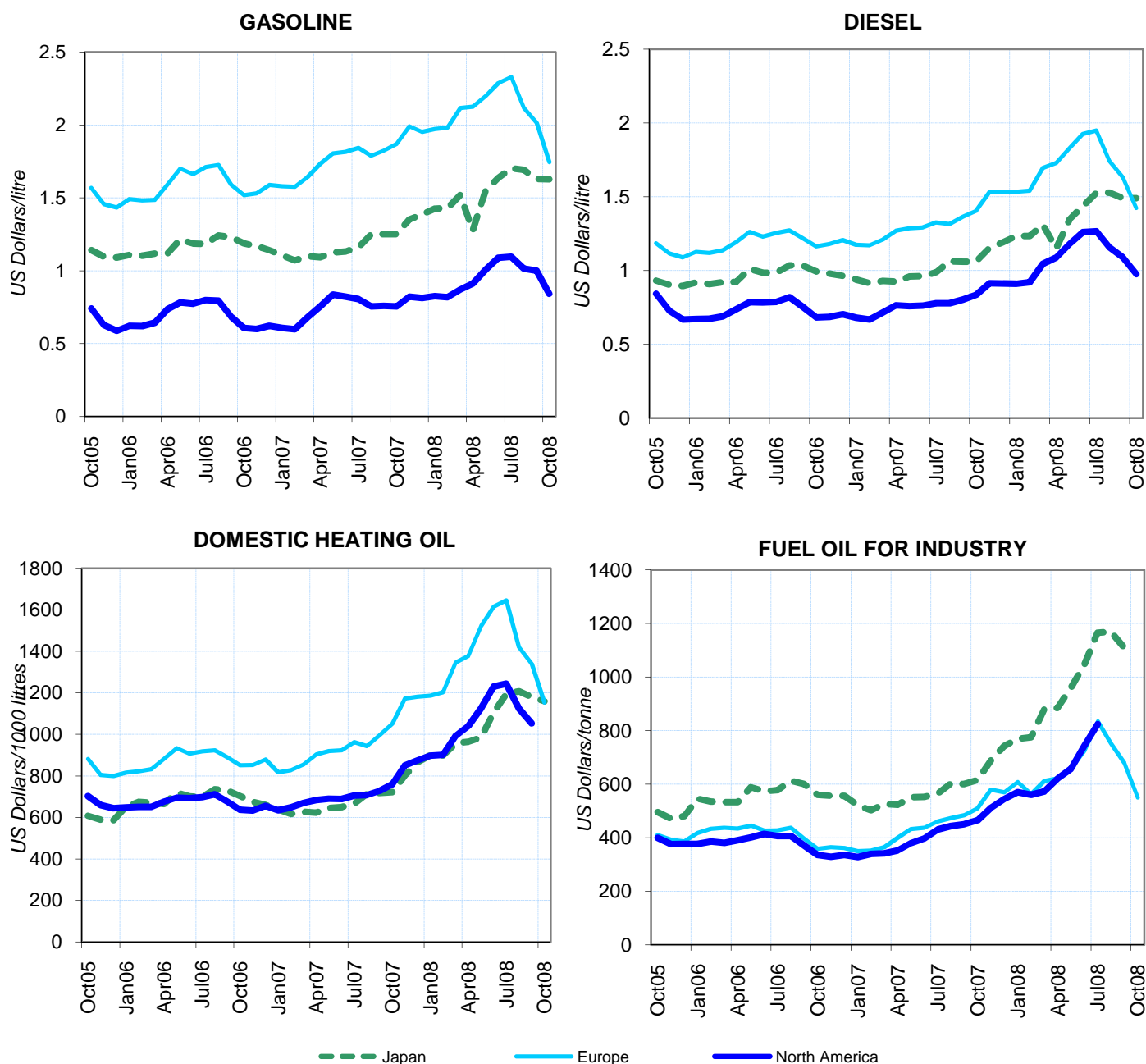
For the two most recent months, consumption is estimated based on the previous year.

© OECD/IEA, 2008

END-USER PETROLEUM PRODUCT PRICES AND AVERAGE CRUDE OIL IMPORT COSTS

October 2008

END-USE PRICES FOR PETROLEUM PRODUCTS *



* Europe includes France, Germany, Italy, Spain and the United Kingdom; North America includes the United States and Canada.

Weighted average price including taxes. For the two most recent months, consumption is estimated based on the previous year.

© OECD/IEA, 2008



END-USER PETROLEUM PRODUCT PRICES AND AVERAGE CRUDE OIL IMPORT COSTS

October 2008

AVERAGE END-USE PRICES *

NATIONAL CURRENCY *							US DOLLARS					
	Total Price	% change from		Ex-Tax Price	% change from		Total Price	% change from		Ex-Tax Price	% change from	
		Sep-08	Oct-07		Sep-08	Oct-07		Sep-08	Oct-07		Sep-08	Oct-07
GASOLINE ¹ (Price per Litre)												
France	1.326	- 6.6	4.0	0.503	- 13.4	8.4	1.760	-13.7	-2.9	0.668	-20.0	1.2
Germany	1.348	- 6.8	- 0.4	0.478	- 14.8	- 0.8	1.789	-13.9	-7.0	0.635	-21.2	-7.5
Italy	1.345	- 6.5	2.4	0.557	- 12.1	5.1	1.785	-13.5	-4.4	0.739	-18.8	-1.9
Spain	1.082	- 7.4	3.3	0.537	- 12.1	5.9	1.436	-14.3	-3.6	0.713	-18.7	-1.2
UK	1.056	- 5.7	8.6	0.395	- 12.0	22.3	1.781	-11.5	-10.4	0.666	-17.4	0.9
Japan	163.0	- 6.3	12.4	99.4	- 9.6	20.8	1.629	-0.1	30.2	0.993	-3.5	39.9
Canada	1.089	- 16.5	10.1	0.763	- 21.2	14.7	0.922	-25.0	-9.0	0.646	-29.3	-5.1
USA	0.837	- 14.9	13.7	0.732	- 16.6	16.0	0.837	-14.9	13.7	0.732	-16.6	16.0
AUTOMOTIVE DIESEL FOR COMMERCIAL USE ² (Price per Litre)												
France	1.036	- 5.6	10.4	0.608	- 9.3	18.8	1.375	-12.8	3.1	0.807	-16.1	10.8
Germany	1.083	- 4.3	8.1	0.613	- 7.4	15.2	1.438	-11.5	0.9	0.814	-14.4	7.5
Italy	1.089	- 6.1	8.5	0.661	- 9.7	13.8	1.446	-13.2	1.2	0.877	-16.5	6.2
Spain	0.949	- 6.3	11.3	0.647	- 9.0	17.4	1.260	-13.4	3.8	0.859	-15.9	9.6
UK	0.999	- 5.1	18.2	0.495	- 9.8	45.2	1.685	-10.9	-2.5	0.835	-15.4	19.7
Japan	149.0	- 6.2	21.2	109.3	- 8.0	29.3	1.489	0.0	40.3	1.092	-1.8	49.8
Canada	1.243	- 4.8	23.3	0.976	- 5.7	30.7	1.053	-14.5	2.0	0.827	-15.4	8.0
USA	0.965	- 9.6	19.6	0.842	- 10.9	23.1	0.965	-9.6	19.6	0.842	-10.9	23.1
DOMESTIC HEATING OIL (Price per 1000 Litres)												
France	810.17	-8.4	19.3	620.80	-9.1	21.4	1075.5	-15.3	11.3	824.1	-16.0	13.3
Germany	811.50	-6.1	25.0	620.58	-6.7	28.2	1077.3	-13.2	16.7	823.8	-13.7	19.7
Italy	1271.22	-5.6	11.1	656.14	-8.8	19.2	1687.5	-12.8	3.6	871.0	-15.7	11.2
Spain	791.58	-8.4	20.3	597.69	-9.5	23.9	1050.8	-15.3	12.3	793.4	-16.3	15.6
UK	547.08	-12.2	24.0	424.13	-14.6	31.3	922.9	-17.6	2.3	715.5	-19.8	8.3
Japan ³	116000	-7.9	38.8	108436	-8.0	39.8	1159.2	-1.7	60.8	1083.6	-1.8	61.9
Canada	1079	-8.4	26.2	987	-8.8	26.8	914.4	-17.8	4.4	836.1	-18.1	4.8
USA
LOW SULPHUR FUEL OIL FOR INDUSTRY ² (Price per Metric Ton)												
France	385.56	-14.8	13.2	367.06	-15.4	14.0	511.8	-21.2	5.7	487.3	-21.8	6.4
Germany	396.63	-12.7	32.1	371.63	-13.5	35.0	526.5	-19.3	23.3	493.3	-20.0	26.0
Italy	426.59	-12.2	14.6	395.20	-13.0	15.9	566.3	-18.8	6.9	524.6	-19.6	8.2
Spain	447.80	-10.6	25.4	432.80	-11.0	26.6	594.5	-17.4	17.1	574.5	-17.7	18.1
UK
Japan
Canada
USA

¹ Unleaded premium (95 RON) for France, Germany, Italy, Spain, UK; regular unleaded for Canada, Japan and the United States.

² VAT excluded from prices for automotive diesel and low sulphur fuel oil when refunded to industry.

³ Kerosene for Japan.

* Prices for France, Germany, Italy and Spain are in Euro; UK in British Pounds, Japan in Yen, Canada in Canadian Dollars.

© OECD/IEA, 2008

END-USER PETROLEUM PRODUCT PRICES AND AVERAGE CRUDE OIL IMPORT COSTS

October 2008

AVERAGE END-USE PRICES *

	Nov07	Dec07	Jan08	Feb08	Mar08	Apr08	May08	Jun08	Jul08	Aug08	Sep08	Oct08
GASOLINE ¹ (Price per Litre)												
France	1.328	1.325	1.344	1.347	1.371	1.375	1.427	1.484	1.478	1.420	1.420	1.326
Germany	1.404	1.348	1.389	1.374	1.423	1.403	1.461	1.508	1.515	1.460	1.447	1.348
Italy	1.346	1.361	1.337	1.364	1.378	1.372	1.456	1.512	1.520	1.456	1.438	1.345
Spain	1.076	1.086	1.068	1.095	1.114	1.118	1.179	1.232	1.248	1.184	1.168	1.082
UK	1.005	1.027	1.036	1.041	1.061	1.077	1.114	1.174	1.189	1.134	1.120	1.056
Japan	150.0	155.9	153.9	153.0	153.0	131.0	162.1	175.1	182.0	185.0	174.0	163.0
Canada	1.040	1.042	1.058	1.069	1.103	1.180	1.278	1.357	1.363	1.285	1.304	1.089
USA	0.803	0.795	0.809	0.800	0.854	0.893	0.986	1.068	1.075	0.998	0.983	0.837
AUTOMOTIVE DIESEL FOR COMMERCIAL USE² (Price per Litre)												
France	0.997	1.008	1.014	1.004	1.057	1.068	1.145	1.207	1.195	1.120	1.098	1.036
Germany	1.082	1.076	1.069	1.062	1.118	1.107	1.188	1.246	1.242	1.168	1.132	1.083
Italy	1.043	1.072	1.046	1.064	1.115	1.140	1.208	1.261	1.268	1.198	1.160	1.089
Spain	0.891	0.913	0.907	0.918	0.970	0.977	1.057	1.109	1.123	1.042	1.013	0.949
UK	0.883	0.915	0.923	0.931	0.957	0.989	1.039	1.108	1.126	1.070	1.053	0.999
Japan	128.0	134.0	133.0	132.0	132.0	118.0	140.5	153.5	162.9	166.9	158.9	149.0
Canada	1.070	1.136	1.127	1.101	1.225	1.295	1.365	1.449	1.462	1.360	1.305	1.243
USA	0.885	0.882	0.880	0.892	1.020	1.065	1.156	1.237	1.239	1.136	1.068	0.965
DOMESTIC HEATING OIL (Price per 1000 Litres)												
France	750.80	769.18	779.98	771.42	822.13	832.76	925.67	994.90	997.45	910.46	884.80	810.17
Germany	714.63	720.77	725.67	735.56	783.31	797.67	898.21	956.24	954.26	886.55	864.57	811.50
Italy	1207.36	1215.98	1210.44	1223.98	1285.21	1292.64	1394.98	1453.85	1464.68	1379.15	1347.25	1271.22
Spain	719.91	735.92	736.04	742.93	798.61	806.79	897.45	971.27	982.09	889.30	864.15	791.58
UK	479.66	488.61	495.85	509.57	543.73	574.60	649.35	694.07	701.48	634.88	623.20	547.08
Japan ³	88999	97368	97035	96203	96370	99011	102724	118295	127778	132000	125889	116000
Canada	906.60	1002.50	1014.21	1024.75	1107.00	1187.25	1265.90	1375.25	1367.60	1256.50	1179.00	1079.40
USA	837.20	857.80	881.50	881.80	977.20	1023.70	1105.60	1212.30	1228.10	1114.00	1044.00	..
LOW SULPHUR FUEL OIL FOR INDUSTRY ² (Price per Metric Ton)												
France	383.32	382.63	378.92	375.16	381.81	396.82	433.72	472.23	525.24	489.79	452.27	385.56
Germany	327.53	346.91	365.00	352.63	365.81	362.75	379.34	414.94	497.51	484.90	454.42	396.63
Italy	417.82	410.98	426.34	410.72	419.27	426.72	463.47	508.69	557.05	519.31	485.86	426.59
Spain	388.14	399.80	427.88	390.62	409.17	411.14	434.37	495.22	539.97	521.17	501.05	447.80
UK	359.50	360.15	381.08
Japan	76355	83539	82987	82987	88513	90723	100119	111723	124433	127749	118355	..
Canada
USA	512.41	544.86	570.31	560.24	572.55	620.65	656.74	743.16	823.72

¹ Unleaded premium (95 RON) for France, Germany, Italy, Spain, UK; regular unleaded for Canada, Japan and the United States.

² VAT excluded from prices for automotive diesel and low sulphur fuel oil when refunded to industry.

³ Kerosene for Japan.

* Prices for France, Germany, Italy and Spain are in Euro; UK in British Pounds, Japan in Yen, Canada in Canadian Dollars.

© OECD/IEA, 2008

END-USER PETROLEUM PRODUCT PRICES AND AVERAGE CRUDE OIL IMPORT COSTS

October 2008

AVERAGE END-USE TAXES *

	Nov07	Dec07	Jan08	Feb08	Mar08	Apr08	May08	Jun08	Jul08	Aug08	Sep08	Oct08
GASOLINE ¹ (Tax per Litre)												
France	0.820	0.819	0.822	0.827	0.831	0.831	0.840	0.849	0.848	0.839	0.839	0.823
Germany	0.879	0.870	0.877	0.874	0.882	0.879	0.888	0.896	0.897	0.888	0.886	0.870
Italy	0.788	0.791	0.787	0.791	0.786	0.776	0.807	0.816	0.817	0.807	0.804	0.788
Spain	0.544	0.546	0.543	0.547	0.550	0.550	0.559	0.566	0.568	0.559	0.557	0.545
UK	0.654	0.657	0.658	0.659	0.662	0.664	0.670	0.679	0.681	0.673	0.671	0.661
Japan	63.0	63.2	63.1	63.1	63.1	37.1	63.5	64.1	64.5	64.6	64.1	63.6
Canada	0.327	0.327	0.320	0.321	0.323	0.330	0.335	0.339	0.339	0.335	0.336	0.326
USA	0.105	0.105	0.105	0.105	0.105	0.105	0.105	0.105	0.105	0.105	0.105	0.105
AUTOMOTIVE DIESEL ² (Tax per Litre)												
France	0.426	0.426	0.426	0.428	0.428	0.428	0.428	0.428	0.428	0.428	0.428	0.428
Germany	0.470	0.470	0.470	0.470	0.470	0.470	0.470	0.470	0.470	0.470	0.470	0.470
Italy	0.423	0.423	0.423	0.423	0.426	0.428	0.428	0.428	0.428	0.428	0.428	0.428
Spain	0.302	0.302	0.302	0.302	0.302	0.302	0.302	0.302	0.302	0.302	0.302	0.302
UK	0.504	0.504	0.504	0.504	0.504	0.504	0.504	0.504	0.504	0.504	0.504	0.504
Japan	38.7	39.0	38.9	38.9	38.9	22.0	39.3	39.9	40.3	40.5	40.1	39.7
Canada	0.265	0.268	0.258	0.256	0.262	0.270	0.273	0.277	0.278	0.273	0.270	0.267
USA	0.123	0.123	0.123	0.123	0.123	0.123	0.123	0.123	0.123	0.123	0.123	0.123
DOMESTIC HEATING OIL (Tax per 1000 Litres)												
France	179.64	182.65	184.42	183.02	191.33	193.07	208.30	219.64	220.06	205.81	201.60	189.37
Germany	175.45	176.43	177.21	178.79	186.42	188.71	204.76	214.03	213.71	202.90	199.39	190.92
Italy	604.44	605.87	604.95	607.21	617.41	618.65	635.71	645.52	647.32	633.07	627.75	615.08
Spain	184.01	186.22	186.23	187.18	194.86	195.99	208.50	218.68	220.17	207.37	203.90	193.89
UK	119.74	120.17	120.51	121.17	122.79	124.26	127.82	129.95	130.30	127.13	126.58	122.95
Japan ³	6278	6677	6661	6621	6629	6755	6932	7673	8125	8326	8035	7564
Canada	79.32	84.75	83.30	83.80	87.71	97.54	101.28	106.49	106.12	100.83	97.14	92.40
USA
LOW SULPHUR FUEL OIL FOR INDUSTRY ² (Tax per Metric Ton)												
France	18.50	18.50	18.50	18.50	18.50	18.50	18.50	18.50	18.50	18.50	18.50	18.50
Germany	25.00	25.00	25.00	25.00	25.00	25.00	25.00	25.00	25.00	25.00	25.00	25.00
Italy	31.39	31.39	31.39	31.39	31.39	31.39	31.39	31.39	31.39	31.39	31.39	31.39
Spain	15.00	15.00	15.00	15.00	15.00	15.00	15.00	15.00	15.00	15.00	15.00	15.00
UK	94.20	94.20	94.20
Japan	3636	3978	3952	3952	4215	4320	4768	5320	5925	6083	5636	..
Canada
USA

1 Unleaded premium (95 RON) for France, Germany, Italy, Spain, UK; regular unleaded for Canada, Japan and the United States.

2 VAT excluded from prices for automotive diesel and low sulphur fuel oil when refunded to industry.

3 Kerosene for Japan.

* Taxes for France, Germany, Italy and Spain are in Euro; UK in British Pounds, Japan in Yen, Canada in Canadian Dollars.

© OECD/IEA, 2008



END-USER PETROLEUM PRODUCT PRICES AND AVERAGE CRUDE OIL IMPORT COSTS

October 2008

AVERAGE CRUDE OIL IMPORT COSTS (USD/barrel)

	France	Germany	Italy	Spain	UK	Japan	Canada	USA
1988	..	15.26	14.86	14.42	14.92	15.47	15.48	14.33
1989	..	18.23	17.48	17.22	17.60	16.91	18.56	17.50
1990	..	23.17	23.23	21.88	22.92	22.64	24.15	21.07
1991	..	20.36	19.14	18.50	20.06	20.14	20.83	18.23
1992	18.94	19.13	18.30	17.31	19.07	19.30	19.46	17.73
1993	16.05	16.88	15.87	15.13	16.58	17.47	17.19	15.87
1994	15.76	15.81	15.49	15.24	15.83	16.48	16.30	15.06
1995	17.14	17.07	16.90	16.96	17.29	18.02	17.76	16.74
1996	20.82	20.68	20.53	20.45	21.08	20.55	21.26	20.16
1997	18.99	19.01	18.88	18.34	19.32	20.55	20.59	18.34
1998	12.43	12.48	12.21	11.80	12.64	13.68	13.15	12.02
1999	17.45	17.51	17.10	16.99	18.01	17.38	17.85	17.06
2000	28.18	28.09	27.77	27.16	28.45	28.72	29.10	27.54
2001	24.13	24.15	23.87	23.32	24.45	25.01	24.87	22.07
2002	24.63	24.40	24.34	23.95	24.58	24.96	24.97	23.52
2003	28.87	28.44	28.58	28.13	29.13	29.26	29.53	27.66
2004	37.61	36.65	36.60	36.03	37.75	36.59	38.13	35.86
2005	52.74	52.30	51.33	50.54	53.79	51.57	52.37	48.82
2006	63.69	63.29	62.50	60.99	65.00	64.03	64.33	59.15
2007	72.22	71.60	70.20	68.66	73.80	70.09	70.04	66.75
2Q2005	49.44	49.13	48.56	47.41	49.76	50.56	49.84	45.87
3Q2005	59.50	59.45	57.31	57.17	60.94	57.23	58.47	55.95
4Q2005	56.35	55.86	54.62	54.34	57.22	56.92	57.11	52.94
1Q2006	60.84	60.02	58.99	58.35	61.26	60.21	59.69	54.39
2Q2006	67.48	66.73	66.01	64.58	68.81	65.80	67.41	63.12
3Q2006	68.27	68.09	67.76	64.39	69.86	70.62	69.26	64.71
4Q2006	58.65	58.19	57.74	56.63	59.64	60.04	59.67	53.69
1Q2007	57.33	56.78	55.34	51.88	57.85	57.55	56.94	53.38
2Q2007	67.75	67.33	66.22	65.60	69.22	65.80	65.43	61.77
3Q2007	74.39	74.39	72.94	72.08	75.89	71.55	73.60	70.07
4Q2007	88.20	87.81	86.36	85.74	89.41	84.76	86.45	81.36
1Q2008	96.82	96.60	94.75	94.62	98.59	93.46	94.48	89.73
2Q2008	120.27	120.25	117.89	117.72	123.03	113.26	116.89	114.21
Aug-06	71.08	71.68	71.30	67.91	73.15	72.40	72.21	66.92
Sep-06	61.61	61.45	63.11	61.27	62.23	70.57	65.11	59.94
Oct-06	57.53	56.78	56.87	56.68	57.71	62.29	59.13	53.86
Nov-06	57.58	57.50	56.36	54.71	58.02	58.91	58.29	52.71
Dec-06	60.77	60.28	59.92	58.24	62.59	59.06	61.66	54.42
Jan-07	54.98	53.66	53.24	51.14	53.27	59.62	55.89	51.48
Feb-07	56.77	56.32	53.93	47.77	57.39	54.34	55.89	52.52
Mar-07	61.12	60.38	58.61	57.33	62.65	58.25	59.38	56.04
Apr-07	65.72	65.67	64.51	64.15	67.75	62.38	65.96	59.63
May-07	67.49	66.33	65.20	64.43	68.04	67.16	64.11	61.46
Jun-07	70.45	70.23	68.91	68.57	72.66	67.84	66.48	64.47
Jul-07	75.47	76.48	73.83	72.40	78.03	70.39	73.50	69.07
Aug-07	72.38	70.95	71.03	70.14	73.42	72.22	73.44	69.57
Sep-07	75.25	75.76	74.10	73.60	77.13	72.19	73.88	71.53
Oct-07	81.51	81.86	79.37	78.99	83.79	78.16	79.39	75.75
Nov-07	91.08	91.08	89.46	89.66	92.41	84.27	89.91	84.08
Dec-07	91.38	90.74	90.53	88.96	92.82	91.37	91.73	83.74
Jan-08	93.62	92.13	91.11	90.56	93.59	91.18	92.22	85.97
Feb-08	94.79	94.34	92.22	92.72	96.26	93.06	92.35	87.25
Mar-08	102.68	102.64	100.96	101.28	103.87	96.15	100.50	95.96
Apr-08	108.78	108.19	106.02	105.69	110.82	104.18	104.04	104.38
May-08	120.85	121.94	119.10	119.74	123.52	112.08	114.58	114.18
Jun-08	131.20	131.81	129.05	128.37	133.47	126.39	129.90	124.19
Jul-08	133.35	131.54	131.37	130.14	135.44	133.46	133.99	128.60
Aug-08	113.60	114.19	113.39	109.56	115.96	132.10	122.57	115.75